



1989



# HO SCALE TRACK & ACCESSORIES

**30° CROSSING BRASS**  
#44-1755

**MANUAL SWITCH LH**  
(1 Piece/Card)  
#44-1751

**MANUAL SWITCH RH**  
#44-1752  
Pack: 12

**90° CROSSING** (1 Piece/Card)  
#44-1758  
Pack: 12

**REMOTE SWITCH LH**  
(1 Piece/Card)  
#44-1767

**REMOTE SWITCH RH**  
#44-1768  
Pack: 12

**9" STRAIGHT**  
#44-9611

**18" RADIUS CURVED**  
(500 Pieces)  
#44-9601

**36" FLEX** (100 Box)  
#44-1710  
Pack: 1

**9" STRAIGHT TERMINAL WITH PLUG** (1 Piece/Card)  
#44-1520  
Pack: 24

**9" STRAIGHT** (4 Pieces/Card)  
#44-1511  
Pack: 24

**36" FLEX** (3 Pieces/Card)  
#44-1711  
Pack: 24

**9" STRAIGHT RERAILER**  
(2 Pieces/Card)  
#44-1729  
Pack: 24

**18" RADIUS CURVED**  
(4 Pieces/Card)  
#44-1501  
Pack: 24

**RAIL JOINERS** (48 Pieces)  
(Carded)  
#44-1732  
Pack: 24



## POWER PACK

#44-6605

Pack: 12



## 2-PIECE LIGHTING KIT

#42-2400

Pack: 24



## MINI WATER PUMP

#42-2319

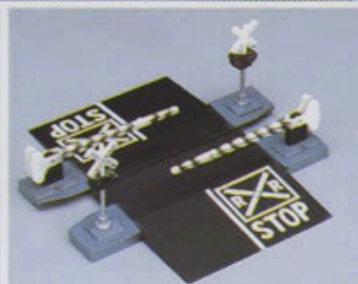
Pack: 24



## PARK ASSORTMENT

#42-2309

Pack: 24



## ROAD CROSSINGS

#42-2308

Pack: 24



## AUTO SET #1

#42-2306

Pack: 24



## ANIMAL SET #1

#42-2301

Pack: 24



## BLOCK SIGNALS

#42-2101

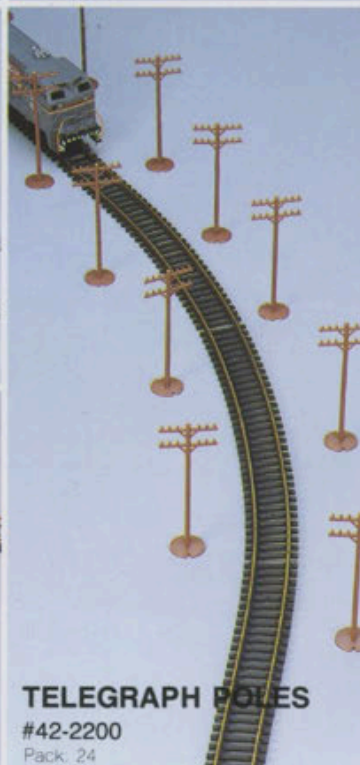
Pack: 24



## TRAFFIC LIGHTS & SIGNS

#42-2307

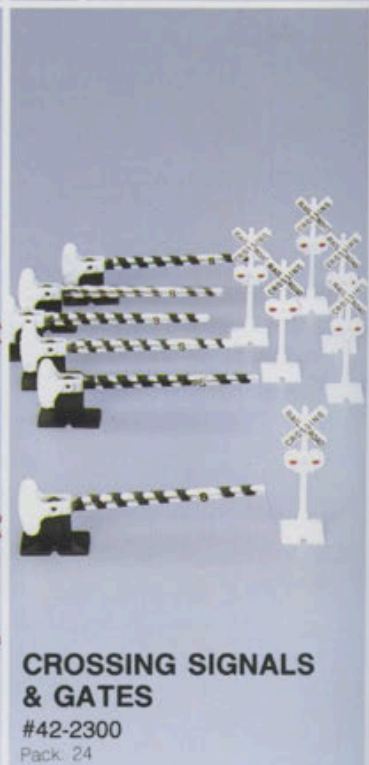
Pack: 24



## TELEGRAPH POLES

#42-2200

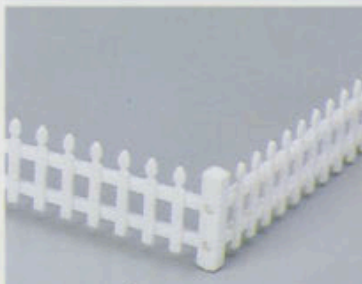
Pack: 24



## CROSSING SIGNALS & GATES

#42-2300

Pack: 24



## PICKET FENCE

#42-2100

Pack: 24



## RAIL & STREET SIGNS

#42-2304

Pack: 24



# HO SCALE PLASTICVILLE, U.S.A.®

SNAP-FIT BUILDING KITS Pack: 12

**CAPE COD HOUSE**

#45-2631



**SALOON**

#45-2912



**BANK & GENERAL STORE**

#45-2919



**SCHOOL HOUSE**

#45-2633



**SIGNAL BRIDGE**

#45-2634

**SWITCH TOWER**

#45-2632

**BARN**

#45-2651



**FARM BUILDINGS & ANIMALS**

#45-2652

**GAS STATION**

#45-2927



**POST OFFICE**

#45-2644

**WATER TANK**

#45-2653



**COALING STATION**

#45-2711



**RANCH HOUSE**

#45-2654

**FREIGHT STATION**

#45-2671



**PEDESTRIAN BRIDGE**

#45-2672



# HO SCALE PLASTICVILLE, U.S.A.®

SNAP-FIT BUILDING KITS Pack: 12



**SUBURBAN STATION**  
#45-2673



**HOUSE UNDER CONSTRUCTION**  
#45-2691



**CATHEDRAL**  
#45-2692



**PLATFORM STATION**  
#45-2694



**HARDWARE STORE**  
#45-2643

**SUPERMARKET**  
#45-2641

**5 & 10 STORE**  
#45-2642



**SPLIT LEVEL HOUSE**  
#45-2713

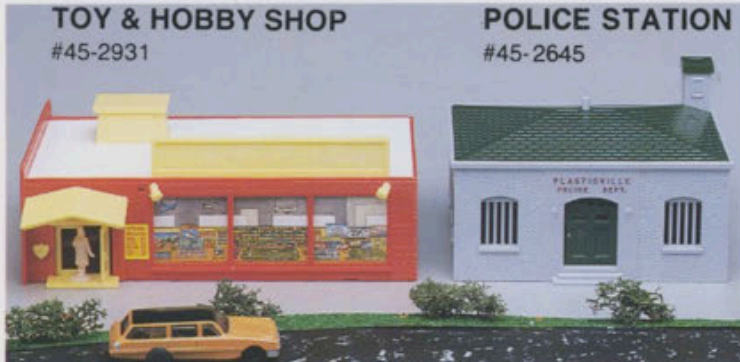


**ROADSIDE STAND WITH PAINTS**  
#45-2715

**FIGURES WITH PAINTS**  
#45-2712

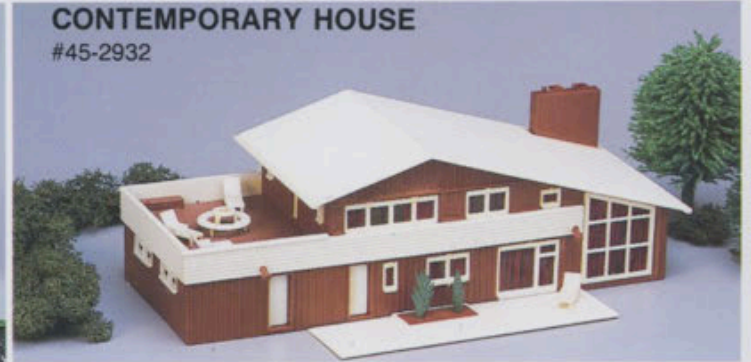


**MOTEL WITH POOL**  
#45-2714



**TOY & HOBBY SHOP**  
#45-2931

**POLICE STATION**  
#45-2645



**CONTEMPORARY HOUSE**  
#45-2932



# O SCALE PLASTICVILLE, U.S.A.®

SNAP-FIT BUILDING KITS

The extra accessory that adds just the right touch to all O Scale layouts. This best selling assortment includes quick and easy-to-assemble building kits that snap together with pre-colored parts that require no painting. For use with Lionel and all other O Scale layouts. The perfect complement to the O Scale Plasticville, U.S.A.® series is the Plasticville, U.S.A.® Scenic Classics series. These complete kits include the building, trees, foliage, grass or even soil. Assembly is a snap! All parts snap-fit to each other and there is no painting required.

#49-1990 24 Assorted

Pack: 1

## CROSSING GATES & SIGNS

#65-1937



## STREET LIGHTS

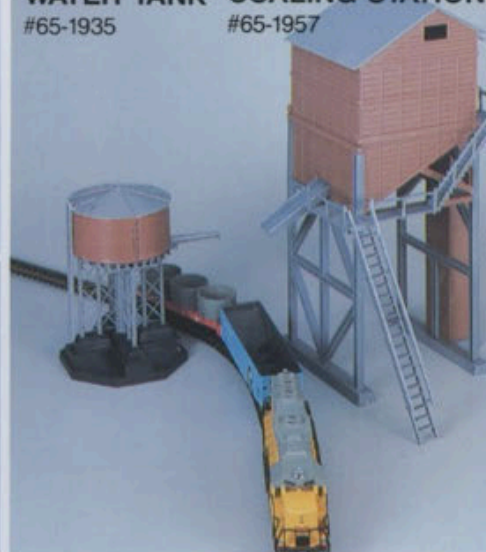
#65-1938



## WATER TANK COALING STATION

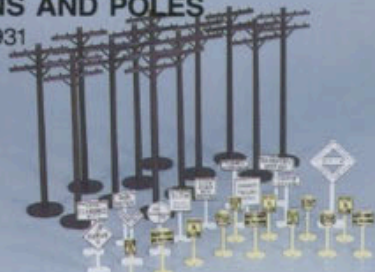
#65-1935

#65-1957



## SIGNS AND POLES

#65-1931



## RAILROAD WORK CAR

#65-1965



## BARN

#65-1932

## CHURCH

#65-1933



## GAS STATION

#65-1962



## O - SCALE SCENIC CLASSIC - WITH LANDSCAPE

### FARM BUILDINGS & EQUIPMENT

#49-1981



### SCHOOL & PLAYGROUND

#49-1982



### LOG CABIN RETREAT

#49-1985



### NEW ENGLAND RANCHER

#49-1986



**DISCONTINUED**



# O SCALE PLASTICVILLE, U.S.A.®

SNAP-FIT BUILDING KITS

## 32 FIGURES WITH PAINTS

#65-1955  
Pack: 12



## SIGNAL BRIDGE & SWITCH TOWER

#65-1951  
Pack: 12



## UNION STATION

#65-1958  
Pack: 12



## SUBURBAN STATION

#65-1954  
Pack: 12



## SPLIT LEVEL HOUSE

#65-1953  
Pack: 12



## LOADING PLATFORM & SHANTY

#65-1952  
Pack: 12



## FIRE HOUSE

#65-1956  
Pack: 12



## BANK

#65-1960  
Pack: 00



## HOSPITAL

#65-1961  
Pack: 12



## APARTMENT HOUSE

#65-1963  
Pack: 12



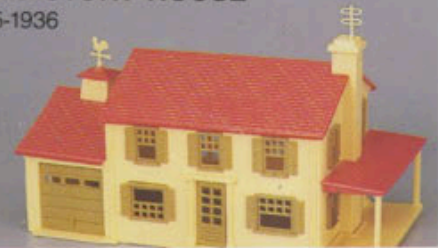
## TV STATION

#65-1964  
Pack: 12



## TWO-STORY HOUSE

#65-1936



## O - SCALE SCENIC CLASSIC - WITH LANDSCAPE

## COLONIAL MANSION

#49-1983



## COUNTRY CHURCH

#49-1984



## BARN

#49-1987



## FACTORY

#49-1988



**DISCONTINUED**



© 1989  
Printed in Hong Kong

**BACHMANN**

1400 E. ERIE AVENUE, PHILADELPHIA, PA 19124  
TELEPHONE: 215-533-1600

