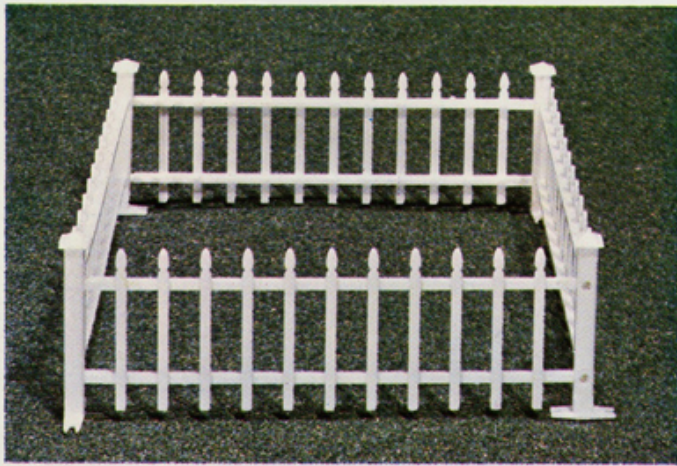


*Plasticville U.S.A.*

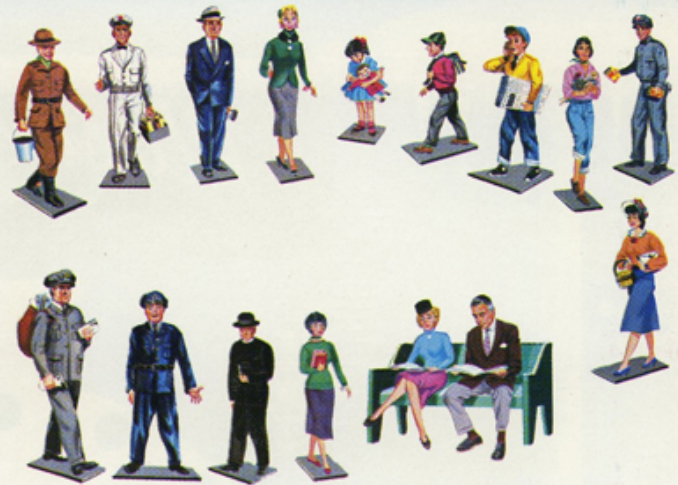


**1967 PLASTICVILLE U.S.A.® RAILROAD ACCESSORIES**





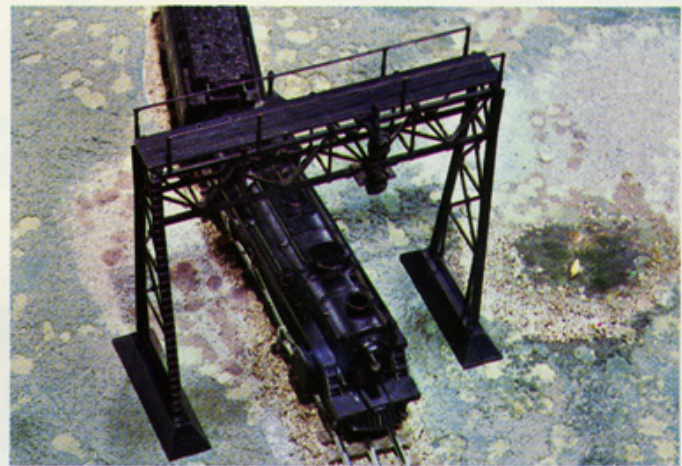
**1002 PICKET FENCE**—The finishing touch for any layout. Fence can be snapped together in any direction to outline houses or to trim around entire platform. Each piece is 6" long by 2¼" high. 72 dozen to shipping carton. **Retail \$.05**



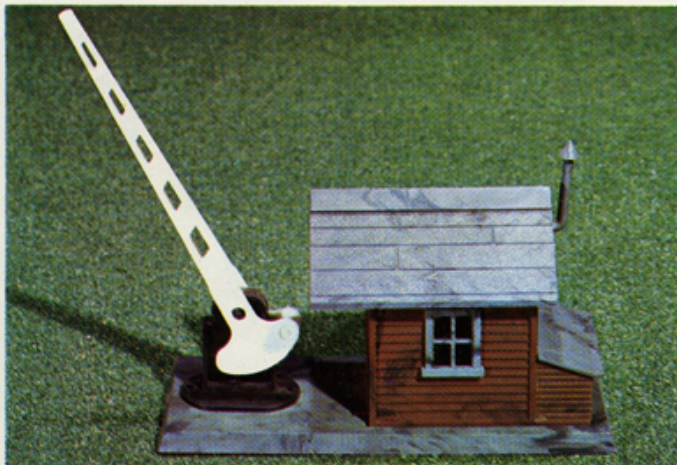
**1619 CITIZENS**—An assortment of 32 figures in different poses that will add life to any platform. No paints included. **Retail \$1.00**



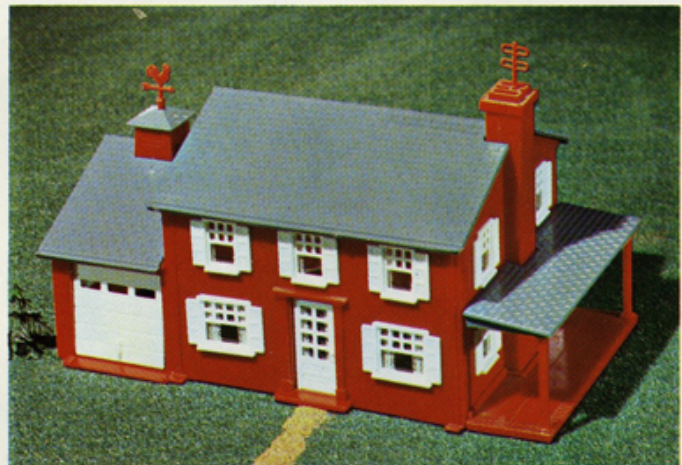
**1631 SWITCH TOWER**  
Molded in two-tone rail-road colors. 7" high by 5" long by 4" wide.  
**Retail \$1.00**



**1632 SIGNAL BRIDGE**—Includes Red, Yellow and Green plastic signal lights. 9½" width will span double track. 9" high. **Retail \$1.00**

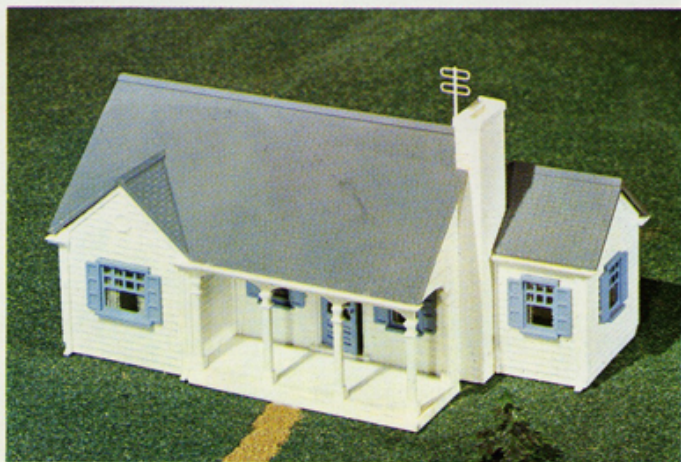


**1633 WATCHMAN'S SHANTY & GATE**—Includes tool shed at rear of shanty and overhead light. Crossing gate can be manually operated. 6" long by 4" high by 2¼" wide.  
**Retail \$1.00**

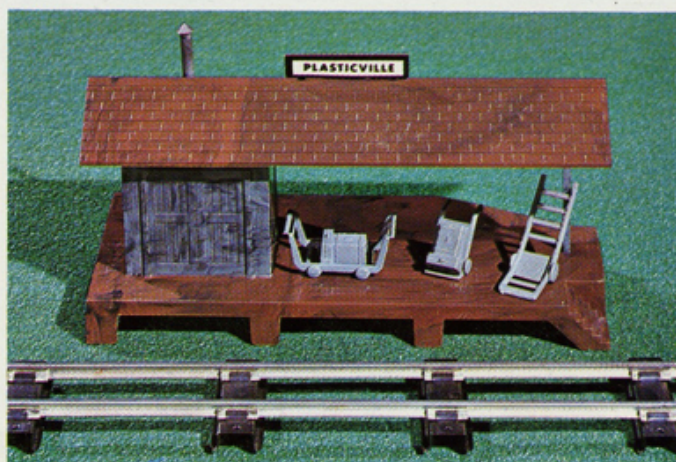


**1807 TWO STORY HOUSE**—A 3 color combination highlights the clean features. Operating doors, snap-in windows and a sheet of curtain decals. 9" long by 5" wide by 6" high.  
**Retail \$1.49**





**1808 NEW ENGLAND RANCHER**—This 1½ story house is one of the all time favorites. White clapboard walls, slate roof, brick chimney and recessed patio with columns. 9" long by 4½" high by 4½" wide. **Retail \$1.49**



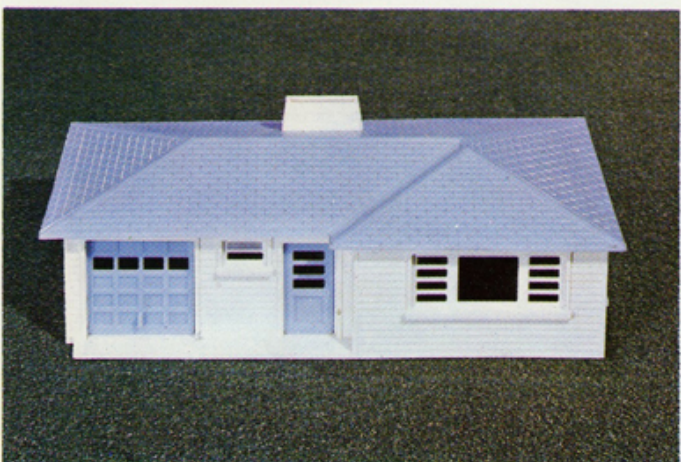
**1809 LOADING PLATFORM**—Adds a plus to any railroad scene. Platform has a freight ramp and steps, and accessories include a baggage cart, two hand trucks and rooftop sign. 8" long, 3½" wide and 4" high. **Retail \$1.49**



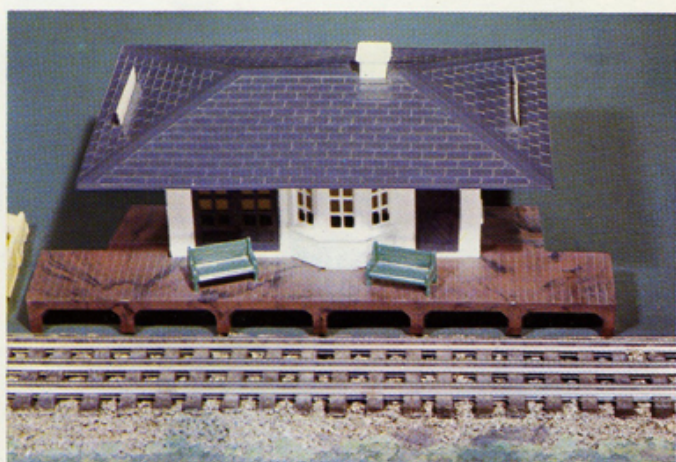
**1810 BUNGALOW**—Every platform needs houses, and this is a welcome addition. Arbor and fence are included. 5½" long by 3" wide by 4" high. **Retail \$1.49**



**1811 BARN**—A typical country barn with silo, weathervane and simulated side doors. 8½" long by 5½" high by 4½" wide. **Retail \$1.49**

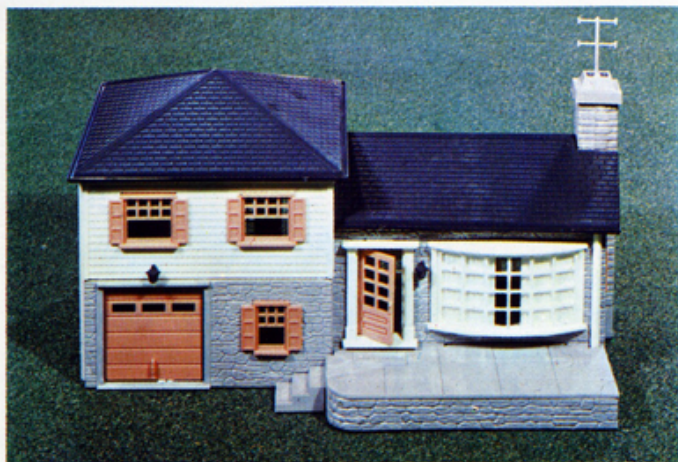


**1812 RANCH HOUSE**—Has a large front picture window and operating garage door. 9" long by 4" high by 4½" wide. **Retail \$1.49**



**1813 SUBURBAN STATION** — Detailing includes wood brown platform with tapered approach ramps at either side. Two benches included. 11" long by 4½" wide by 4½" high. **Retail \$1.49**





**1908 SPLIT LEVEL HOUSE** — Suburban modern design. 10" long by 6½" high by 4½" wide. Retail \$1.98



**1909 GAS STATION** — Realistic highway service station with auto and gas pumps. 9" long by 5½" high by 5" wide. Retail \$1.98



**1910 COLONIAL CHURCH** — A fine reproduction of the old time country side church, beautifully finished in red brick walls, slate gray roof and gleaming white steeple. 7½" long, 4¼" wide and 10½" high. Retail \$1.98

## HO-GAUGE

RED NUMBERS INDICATE BLISTER PACK



**2602-3602 BARN** — A typical country barn with feed shed and silo. 5" long by 4" high by 2½" wide. Retail \$1.00

## HO-GAUGE

RED NUMBERS INDICATE BLISTER PACK

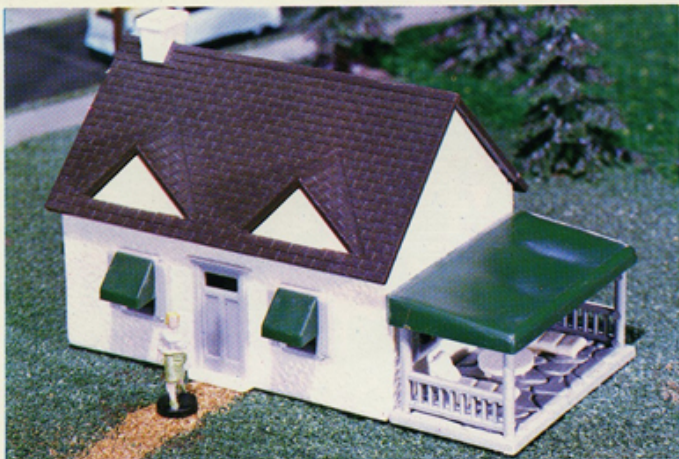


**2606 CITIZENS** — An assortment of 48 figures in true HO scale. There are two pieces each of 24 different people for both residential and railroad use. These will add infinite detail to any platform. Paints not included. Retail \$1.00



**2610-3610 FREIGHT STATION** — Has 4 sliding freight doors, large rooftop sign, 3 bales, 2 barrels, crate, hand truck and railroad figure. Decals included for signs on roof, walls, and office. 5½" long by 3" high by 2½" wide. Retail \$1.00





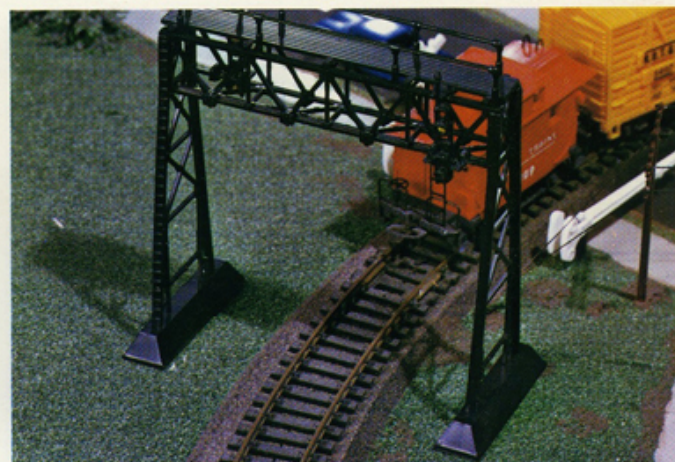
**2617 CAPE COD HOUSE**—Features a side patio with awning and three pieces of patio furniture. Also includes 6 awnings for windows and one figure. 4" long by 3" high by 2" wide. **Retail \$1.00**



**2618 RANCH HOUSE**—"Extras" include operating garage door, 5 awnings for windows, 1 figure and rear patio with furniture. 5" long by 3½" wide by 1½" high. **Retail \$1.00**



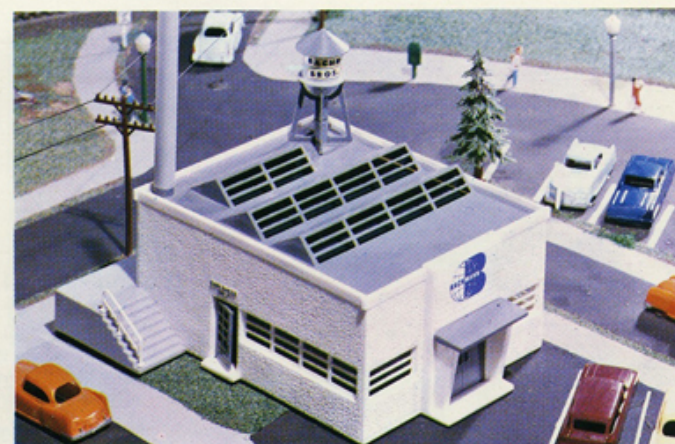
**2619 SWITCH TOWER**—A popular trackside structure with accessories to match. Block signal with lights, barrel and railroad figure are all included. 3" long by 4" high by 2½" wide. **Retail \$1.00**



**2620-3620 SIGNAL BRIDGE**—Detailed down to the rivets on the beams and simulated ladder on the side supports. Will span a double track and includes Red, Yellow and Green plastic signal lights. 4½" long by 4¾" high. **Retail \$1.00**

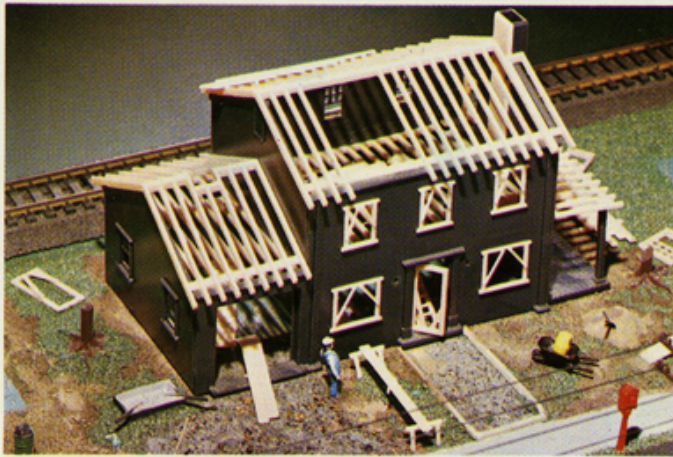


**2800-3800 CATHEDRAL**—Beautifully carved stone work on walls is highlighted by stained glass windows on all sides. Twin gabled slate roof, red door, bell and cross for steeple. 5" long by 6½" high by 4½" wide. **Retail \$1.49**



**2801 FACTORY**—Rear platform with overhead operating door can be used as truck loading dock or for railroad siding. Building has saw-tooth roof, water tower and smoke stack. Sheet of decals included for signs and company name. 4½" long by 5" high by 5" wide. **Retail \$1.49**





**2803-3803 HOUSE UNDER CONSTRUCTION** — This unfinished house has many accessories including Lumber, Window Frames, Ladder, Mortar Box, Sand Pile with Shovel, Wheelbarrow, Saw Horses and 2 Workmen. 6¼" long by 3¼" wide by 4" high. **Retail \$1.49**



**2805 CROSS-OVER BRIDGE** — Uniquely designed, this Bridge can be assembled several ways, to suit a particular layout. Bridge steps can be placed at either end of the walkway, or at right angles to it in either direction. Large sheet of full color decals is included for trim. 16" long by 4½" high. **Retail \$1.49**



**2806-3806 SUBURBAN STATION WITH PLATFORM** — A feature item with 9 accessory pieces including 3 figures, 2 crates, 2 suitcases, hand truck and bench. Roof signs also provided. 5½" long by 2" high by 3" wide. **Retail \$1.49**



**2807-3807 GAS STATION** — Newly designed, this Gas Station has all the trimmings. Gas Pumps, Car, Oil Racks, Soda Machine, and Sign support with assorted shapes. Sheet of full color decals included for company insignias, service area signs and rest rooms. 6" long by 3½" wide by 2" high. **Retail \$1.49**



**2808 COALING STATION** — The only one of its kind. Bucket elevator on side, simulated steel corrugated roofs, wooden hopper with chute and concrete supports. 8¼" high by 4½" long by 3¼" wide. **Retail \$1.49**

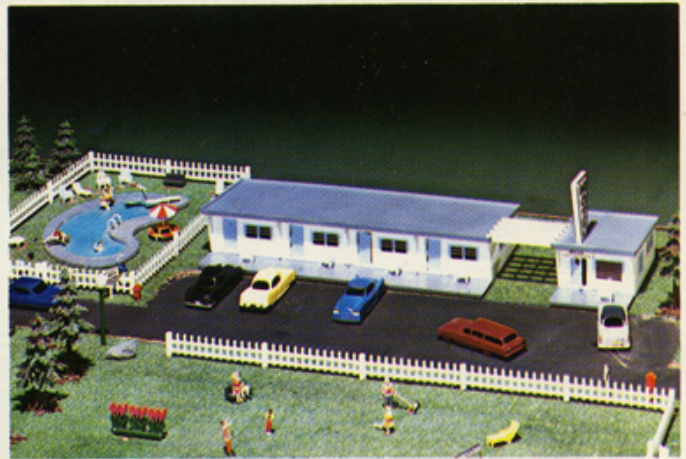


**2901-3901 SPLIT LEVEL HOUSE** — Modern in every detail. Large picture window with draperies, black wrought iron patio railing, welcome mat, outside overhead lights, curtains for windows, TV antenna and operating garage door. 6" long by 4" wide by 3½" high. **Retail \$1.98**

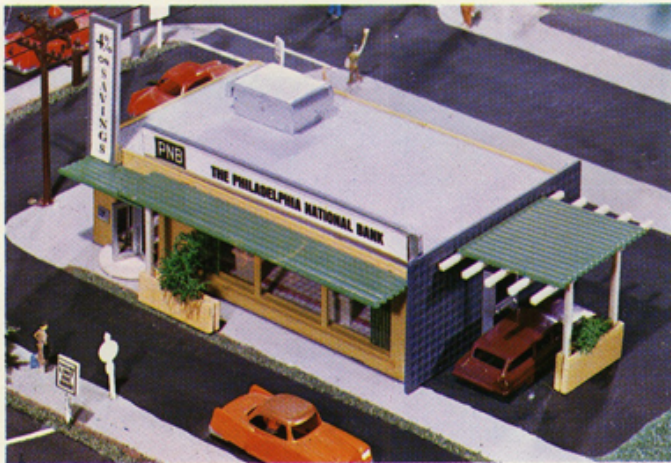




**2902-3902 TWO STORY HOUSE**—Many features, including a side porch with roof, operating front, side and garage doors, outside lights for front and rear, weathervane and TV antenna, plus sheet of curtain decals for all windows. 6½" long by 3½" wide by 4" high. **Retail \$1.98**



**2903 MOTEL WITH POOL**—A 4 unit modern structure with kidney shaped swimming pool. A separate office building with signs is included. Other accessories include 6 deck chairs plus ladder and diving board for pool. 12" long by 4" wide. **Retail \$1.98**



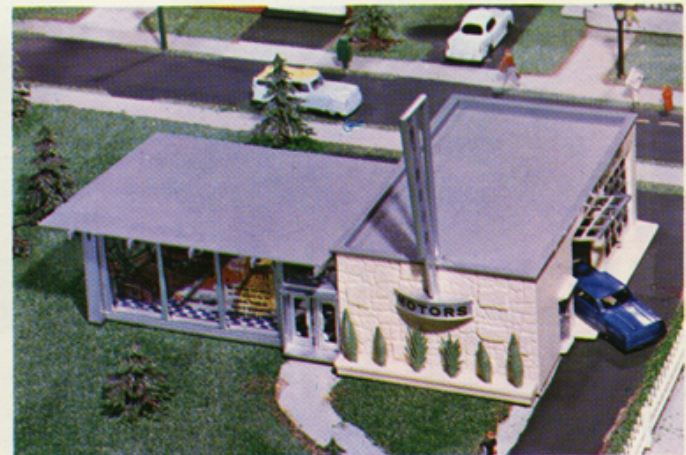
**2904-3904 DRIVE-IN BANK**—Highlighted by silver revolving doors and drive-in canopy, accessories include decals for signs, night depository, vault, counters and desk, clear sheet window inserts, pre-cut tile floor and shrubbery for flower boxes. 7¾" long by 4½" wide by 2½" high. **Retail \$1.98**



**2905-3905 MEN'S STORE**—Modern in design, this fashionable shop includes such accessories as a dressing room, 4 counters, 2 clothes racks, colorful floor insert, clear sheet windows with curtains and assorted decals. 6" long by 4½" wide by 2½" high. **Retail \$1.98**



**2906-3906 CONTEMPORARY HOUSE**—This beautiful four color model has sun deck with furniture, shrubbery for front and back, rural type mail box and patio barbeque. Decals also included for draperies and curtains. 9" long by 4" wide by 3" high. **Retail \$1.98**



**2907-3907 NEW CAR SHOWROOM**—A real show-place complete with service department. Clear plastic windows, decals for window and sign trim, 3 autos and a colorful showroom floor are included. 11" long by 5" wide by 2" high. **Retail \$1.98**



# HO BOX...and BLISTER PACK DEALS

A CHOICE OF 2 ASSORTMENTS, EACH CONTAINING 6 DOZEN. EITHER ONE IS A FINE SELECTION, AND BOTH ARE SHIPPED IN A COMBINATION DISPLAY-SHIPPER AS PICTURED.

## #2003

6	2602	Barn	.....	\$1.00
6	2610	Freight Station	.....	1.00
6	2617	Cape Cod House	.....	1.00
6	2619	Switch Tower	.....	1.00
6	2801	Factory	.....	1.49
6	2806	Suburban Station	.....	1.49
6	2807	Gas Station	.....	1.49
6	2808	Coaling Station	.....	1.49
6	2901	Split Level House	.....	1.98
6	2903	Motel with Pool	.....	1.98
6	2904	Drive-in Bank	.....	1.98
6	2907	New Car Showroom	.....	1.98

RETAIL VALUE \$107.28

SHIPPING WEIGHT 30 LBS.



## #2004

6	2602	Barn	.....	\$1.00
6	2606	Citizens	.....	1.00
6	2618	Ranch House	.....	1.00
6	2620	Signal Bridge	.....	1.00
6	2800	Cathedral	.....	1.49
6	2803	House Under Const.	.....	1.49
6	2805	Cross-over Bridge	.....	1.49
6	2806	Suburban Station	.....	1.49
6	2807	Gas Station	.....	1.49
6	2902	Two Story House	.....	1.98
6	2905	Men's Store	.....	1.98
6	2906	Contemporary House	.....	1.98

RETAIL VALUE \$104.34

SHIPPING WEIGHT 30 LBS.

## #3015 15 DOZ. FLOOR STAND

A complete HO department. Heavy duty stand is provided at "no charge," and is shipped with all stock mounted on the rack, ready for immediate selling. Freight charges are prepaid.



### Contents

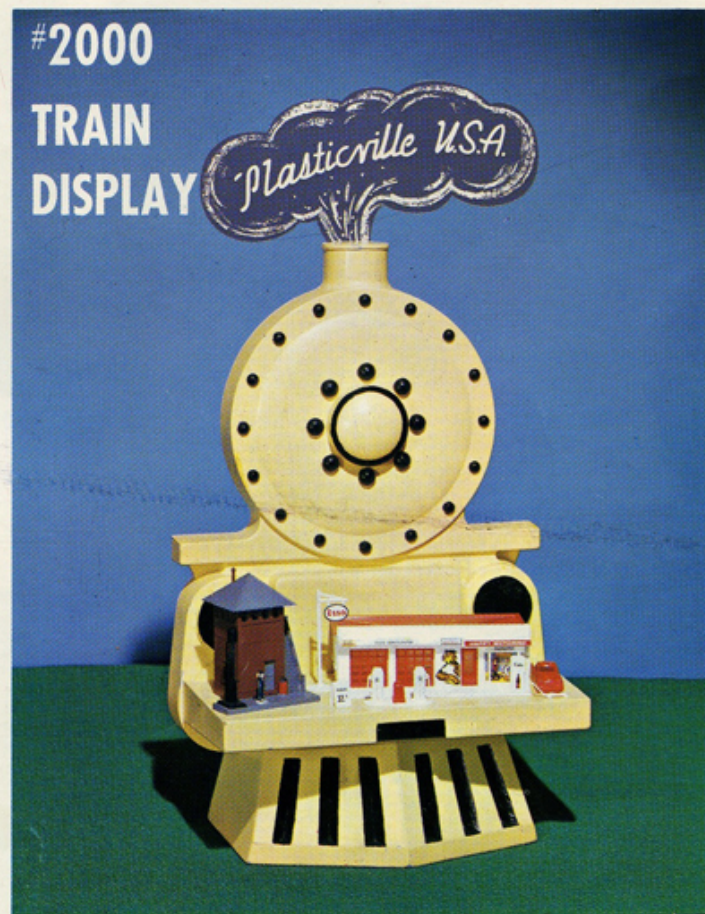
- 3 doz. @ \$1.00
- 5 doz. @ 1.49
- 7 doz. @ 1.98

RETAIL VALUE  
\$291.72

SHIPPING WEIGHT  
75 LBS.

## #2000

### TRAIN DISPLAY



A colorful and unique point of purchase display that will brighten any window or counter. This display is shipped "free" with any of the assortments listed on this page, and comes complete with two built up models. Also available through your distributor with purchase of open stock.



**BACHMANN BROS., INC.** Established 1833 Phila. 24, U.S.A.

Printed in U.S.A.